

People and Posts

Assistant Editor: Greg Bailey, Iowa State University. The MAC Membership Committee invites members to share positions, appointments, and honors in the People and Posts column. Please send items to Greg at gtbailey@iastate.edu. Submissions must be 150 words or less. Images are welcome!

People

ILLINOIS

Kenleigh Howard
North Shore Country Day
Blanca Hurley
Erin Matson
Chicago History Museum
Anna Petrelli (Student)
University of Illinois
Urbana-Champaign

INDIANA

Evan Miller
Wabash College

IOWA

Rebecca Wells
Iowa State University

MINNESOTA

Thor Anderson
Saving Tape Media Conversion
Pam Gladis
Southwest Minnesota State
University
Marisa Morseth (Student)

NORTH DAKOTA

Virginia Bjorness
State Historical Society of North
Dakota

WISCONSIN

Melissa Cook
Menominee Indian Tribe of
Wisconsin
Meg Paulino
Franciscan Sisters of Perpetual
Adoration

AEON DELIVERS

The Automated Request and Workflow Management Software designed specifically for special collections libraries and archives.

Your Researchers want to **find it, request it, see it.**



WITH AEON, THEY CAN.

Aeon
Managing Archives and Special Collections

ATLAS SYSTEMS

YOU HAVE A JOB TO DO. WE HELP YOU DO IT.



Aeon

> **Enhanced services for your users,** increasing access to your special collections remotely or onsite. Aeon allows researchers to register, request resources or scans, and pay for resources online -- maximizing their time and the time of your staff.

> **Increased staff efficiency saves time and money.** Aeon automates request fulfillment, routine tasks, and data tracking, allowing staff to manage requests while gathering analytical usage statistics.

> **Improved security for your rare and priceless resources.** Aeon focuses on your material – where it's been, where it needs to go. Aeon is designed to know who last had a resource and directs staff on what should happen next.

To learn why more than **100 institutions** now use Aeon, contact us at aeon@atlas-sys.com.

Service. Security. Statistics.

(Continued from page 21)

Posts

On January 30, 2023, **Greg Bailey** started as the head of the Special Collections and University Archives (SCUA) at Iowa State University. In this role, he provides guidance, support, and growth of SCUA's staff and collections. He had served the previous three years as university archivist in SCUA and before that as university archivist and Clements Curator at Texas A&M University (2014–2019) and university archivist and records manager at Stephen F. Austin State University (2011–2014). An Illinois native, he holds a BA from Eastern Illinois University and an MLS from Indiana University.



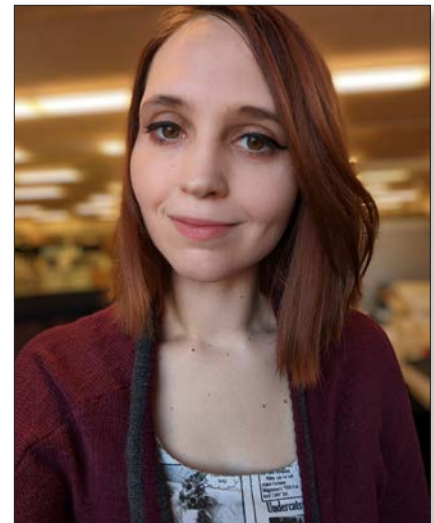
Greg Bailey

Sarah Conrad joined the University of Michigan Special Collections Research Center (SCRC) on October 10, 2022. In her capacity as processing archivist, Conrad will be processing, arranging, and (re)describing some of the library's most-requested collections. She comes to SCRC from Hagerstown Community College, where she worked as archives and reference librarian and lone arranger. She received her MLIS from Wayne State University and previously worked at the Chelsea District Library as well as at the Eastern Michigan University Archives and the Gerald R. Ford Presidential Library.



Sarah Conrad

Katie Jones joined the Special Collections Research Center (SCRC) at the University of Michigan on November 1, 2022. She will be serving as a processing archivist, helping to process, reprocess, and arrange its ever-expanding collections. She also intends to help launch an overhaul of the location tracking system used in SCRC. Jones joins the U-M Library from the University of Nebraska–Lincoln, where she worked as an archives specialist for Archives & Special Collections. She has also served as agricultural archives specialist for UNL, as well as working with the Paleontological Society and the Farm Foundation at the University of Illinois. Jones received her MLIS from the University of Illinois at Urbana-Champaign.



Katie Jones