



Jeweled Couture Dress-1

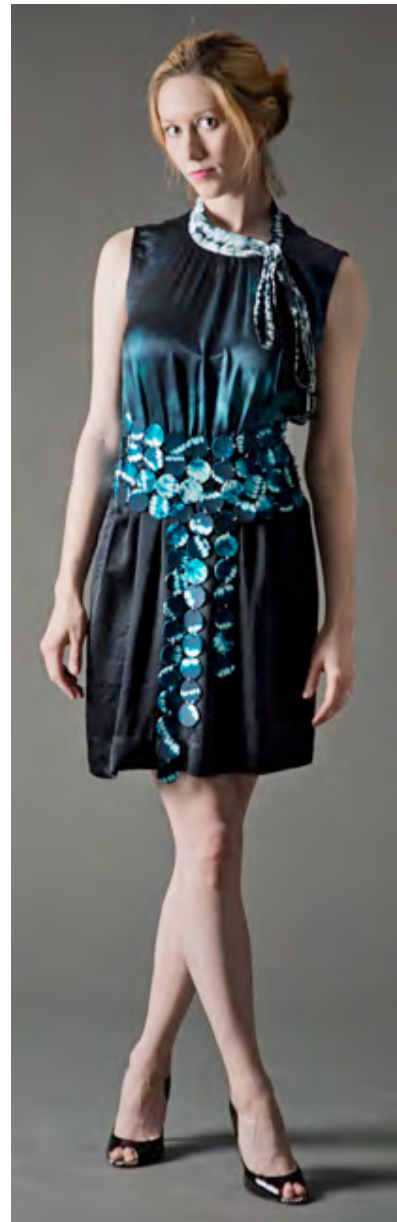
Kanupriya Pande, University Of North Texas, USA

Keywords: Shibori, Sustainability, Jewelry



With fast fashion taking control of the fashion staircase that's always demanding and ever changing I wanted to do something that was unique yet at the same time commercially viable. My Idea of jeweled couture thrives on the concept of eveningwear dresses that come with induced jewelry that is a vital component of the dress made out of same fabric as that of the dress. To start with, I used charmeuse silk and dyed it in nocturnal color (blacks and indigo) with slight tonal effect. I then used the same silk with traditional Orinui shibori techniques to later use it in my extended jewelry component for my garment. I used circular discs of 1.25" diameter made out of cardboard and wrapped the shibori silk on them. With 2 discs pasted

together I drilled holes in these circular forms. For assembling these circular pieces I used aluminum jump rings. Combining them together I made my extended garment component, which is a belt in this case. I used the plain dyed fabric for making rest of my dress and shibori printed fabric for my collar with a bow and belt. The belt that I made is adjustable and can be worn sideways or front ways as shown in the picture. My dress has fabric-coated buttons at the back that serve as an opening and an elastic at the waist. It's a size 8 sleeveless eveningwear dress simple yet classy. I finished this piece in April 2013.



Page 2 of 2